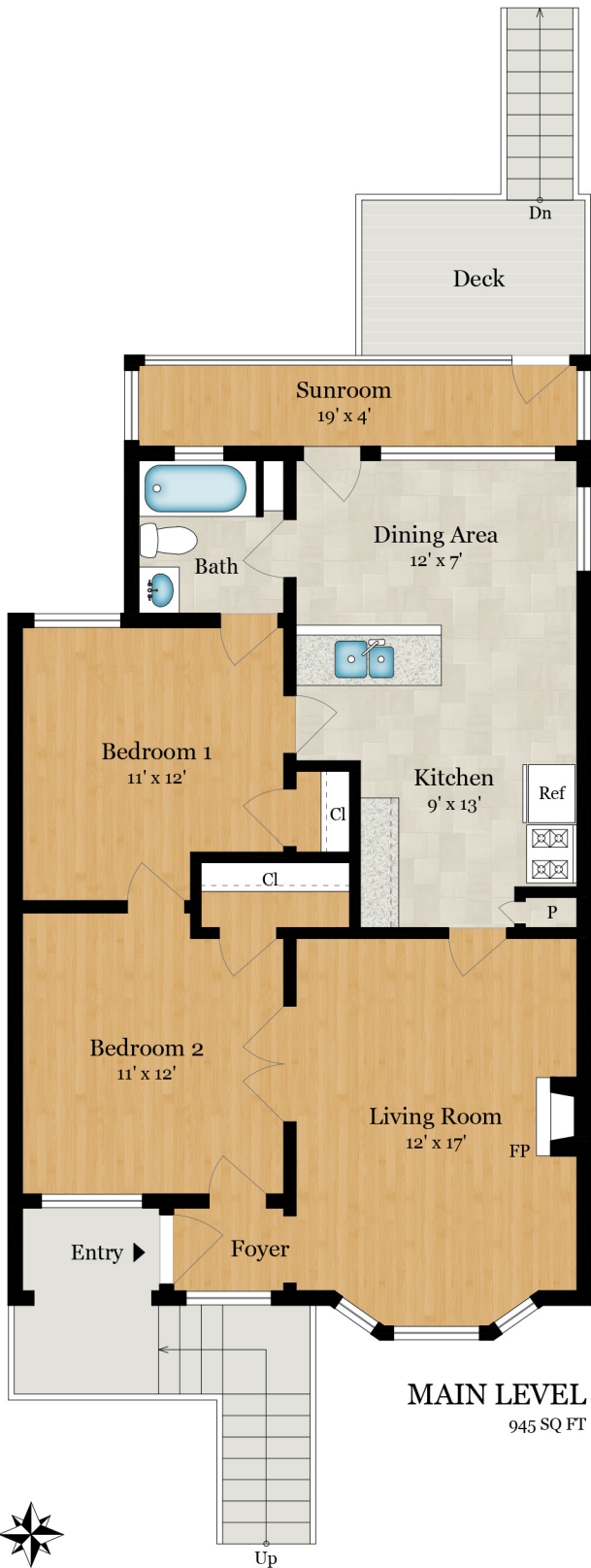


309 WESTLAKE AVENUE

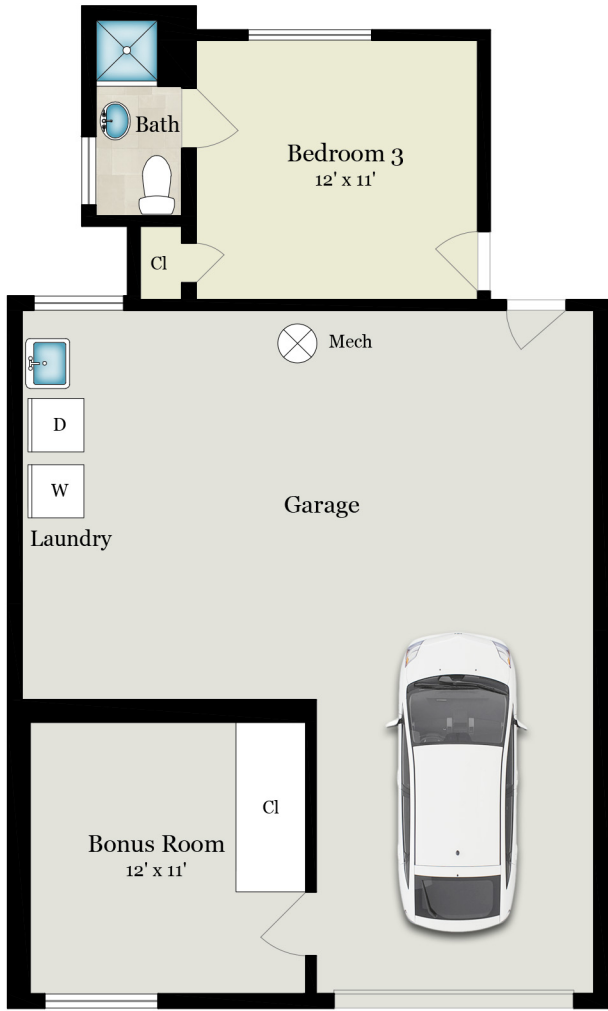
DALY CITY, CA 94015



Estimated Total Finished Square Footage: 1,140 SQ FT

Above-Grade: 1,140 SQ FT Below-Grade: N/A
 Plus 585 SQ FT Garage on Lower Level
 Plus 145 SQ FT Bonus Room on Lower Level
 Calculated per ANSI Standard Z765-2003.

* Estimated Total Finished & Unfinished Square Footage: 1,870 SQ FT



309 WESTLAKE AVENUE

DALY CITY, CA 94015



SITE PLAN

